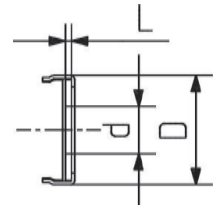


GASKET | NICKEL GASKET & RETAINER

TUBE SIZE

Tube O.D.	Part number	L		d		D	
		mm	inch	mm	inch	mm	inch
¼", 6 mm, 8 mm	DNI 14 R ³	0,7	0,03	6,1	0,24	12,7	0,50
⅜", ½", 10 mm, 12 mm	DNI 12 R ³	0,7	0,03	11,2	0,44	20,1	0,79
¾", 18 mm	DNI 34 R	0,7	0,03	16,8	0,66	29,0	1,14
1"	DNI 100 R	0,7	0,03	22,6	0,89	25,6	1,40



GASKET | NICKEL

TUBE SIZE

Tube O.D.	Part number	L		d		D	
		mm	inch	mm	inch	mm	inch
⅛"	DNI 18	0,5	0,02	2,3	0,09	6,6	0,26
¼", 6 mm, 8 mm	DNI 14	0,7	0,03	6,1	0,24	11,9	0,47
⅜", ½", 10 mm, 12 mm	DNI 12	0,7	0,03	11,2	0,44	19,8	1,78
¾", 18 mm	DNI 34	0,7	0,03	16,8	0,66	29,0	1,14
1"	DNI 100	0,7	0,03	22,6	0,89	35,6	1,40



GASKET | SILVER PLATED 316L

TUBE SIZE

Tube O.D.	Part number	L		d		D	
		mm	inch	mm	inch	mm	inch
⅛"	JSS 18	0,5	0,02	2,3	0,09	6,6	0,26
¼", 6 mm, 8 mm	JSS 14 ^{1,2}	0,7	0,03	6,1	0,24	11,9	0,47
⅜", ½", 10 mm, 12 mm	JSS 12 ¹	0,7	0,03	11,2	0,44	19,8	1,78
¾", 18 mm	JSS 34 ¹	0,7	0,03	16,8	0,66	29,0	1,14
1"	JSS 100 ¹	0,7	0,03	22,6	0,89	35,6	1,40



¹ On request: for silver plated Nickel, use the prefix JNI (Example: JNI 14)

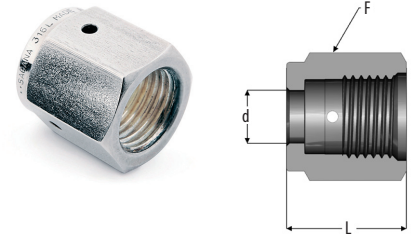
² On request: blind gasket, use part number JSS 14 EB

³ On request in stainless steel, use the prefix JSS (Example: JSS 14 R)

NUTS | FEMALE NUT

TUBE SIZE

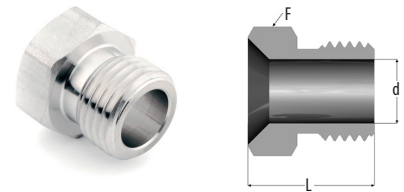
Tube O.D.	Part number	L		d		F
		mm	inch	mm	inch	mm
1/8"	FN 18	13,5	0,53	5,3	0,21	11,1
1/4", 6 mm, 8 mm	FN 14	20,6	0,81	9,1	0,36	19,1
3/8", 1/2", 10 mm, 12 mm	FN 12	22,4	0,88	15,5	0,61	27,0
3/4", 18 mm	FN 34	28,4	1,12	22,6	0,89	38,1
1"	FN 100	34,0	1,34	30,5	1,20	44,5



NUTS | MALE NUT

TUBE SIZE

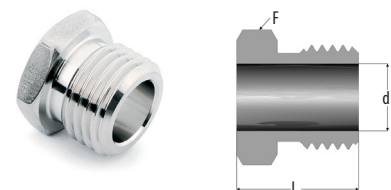
Tube O.D.	Part number	L		d		F
		mm	inch	mm	inch	mm
1/8"	MN 18	12,7	0,50	5,3	0,21	9,5
1/4", 6 mm, 8 mm	MN 14 ¹	18,0	0,71	9,1	0,36	15,9
3/8", 1/2", 10 mm, 12 mm	MN 12	20,6	0,81	15,5	0,61	23,8
3/4", 18 mm	MN 34	25,4	1,00	22,6	0,89	33,3
1"	MN 100	30,2	1,19	30,5	1,20	41,3



NUTS | SHORT MALE NUT

TUBE SIZE

Tube O.D.	Part number	L		d		F
		mm	inch	mm	inch	mm
1/4", 6 mm, 8 mm	SMN 14	13,7	0,54	9,1	0,36	15,9
1/4", 6 mm, 8 mm	SMN 14.6	16,5	0,65	9,1	0,36	15,9

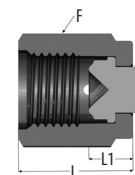


¹ A taper at the hex allows the nut to move around 90° tube bends

PLUGS | FEMALE CAP

TUBE SIZE

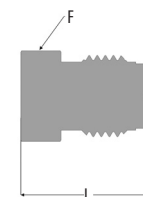
Tube O.D.	Part number	L		L1		F
		mm	inch	mm	inch	
¼", 6 mm, 8 mm	EBF 14 ¹	23,9	0,94	11,2	0,44	19,1
⅜", ½", 10 mm, 12 mm	EBF 12 ¹	25,6	1,01	11,4	0,45	27,0
¾", 18 mm	EBF 34	32,8	1,29	13,7	0,54	38,1
1"	EBF 100	39,1	1,54	16,0	0,63	44,5



PLUGS | MALE PLUG

TUBE SIZE

Tube O.D.	Part number	L		F
		mm	inch	
⅛"	EBM 18	17,3	0,68	9,5
¼", 6 mm, 8 mm	EBM 14 ^{2,3}	23,4	0,92	15,9
⅜", ½", 10 mm, 12 mm	EBM 12 ³	27,4	1,08	23,8
¾", 18 mm	EBM 34	36,3	1,43	33,3
1"	EBM 100	38,6	1,52	41,3



PLUGS | GLAND PLUG

TUBE SIZE

Tube O.D.	Part number	L	
		mm	inch
⅛"	ELB 18	17,8	0,70
¼", 6 mm, 8 mm	ELB 14 ⁴	33,3	1,31
⅜", ½", 10 mm, 12 mm	ELB 12	38,1	1,50
¾", 18 mm	ELB 34	50,8	2,00
1"	ELB 100	56,4	2,22



¹ On request with lanyard, use EBFL as a part number (Example: EBFL 14)

² Also available as a rotatable plug. Ordering number: EBMR 14

³ On request with lanyard, use EBML as a part number (Example: EBML 14)

⁴ On request it can be delivered with L = 19.0 (0.75") Part number: EB 14

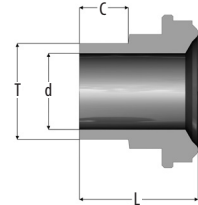
GLANDS | MINI SHORT FEMALE GLAND

TEESING

WWW.TEESING.COM

TUBE SIZE

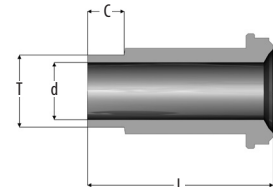
Tube O.D.	Part number	L		d		C		Nominal Wall Thickness		Working Pressure	
		mm	inch	mm	inch	mm	inch	mm	inch	PSIG	bar
FRACTIONAL											
¼"	MG.EMC 14 ¹	15,2	0,60	4,6	0,18	6,4	0,25	0,89	0,035	5100	350
⅜"	MG.EMC 38	15,7	0,62	7,7	0,30	6,4	0,25	0,89	0,035	3300	220
½"	MG.EMC 12	15,7	0,62	10,2	0,40	6,4	0,25	1,25	0,049	3500	240
METRIC											
6 mm	MG.EMC 6M	15,2	0,60	4,0	0,16	6,4	0,25	1,0	0,039	6800	460
8 mm	MG.EMC 8M	15,7	0,62	6,0	0,24	6,4	0,25	1,0	0,039	4800	330
JIS											
¼"	MG.EMC 14J	15,2	0,60	4,4	0,17	6,4	0,25	1,0	0,039	5600	380
⅜"	MG.EMC 38J	15,7	0,62	7,5	0,39	6,4	0,25	1,0	0,039	3500	240



GLANDS | MINI MALE GLAND

TUBE SIZE

Tube O.D.	Part number	L		d		C		Nominal Wall Thickness		Working Pressure	
		mm	inch	mm	inch	mm	inch	mm	inch	PSIG	bar
FRACTIONAL											
⅛"	MG.EM 18 ²	23,4	0,92	2,1	0,08	6,4	0,25	0,71	0,028	5100	350
¼"	MG.EM 14	30,5	1,20	4,6	0,18	6,4	0,25	0,89	0,035	3300	220
⅜"	MG.EM 38	32,8	1,29	7,7	0,30	6,4	0,25	0,89	0,035	3300	240
½"	MG.EM 12	32,8	1,29	10,2	0,40	6,4	0,25	1,25	0,049	3500	240
METRIC											
6 mm	MG.EM 6M	30,5	1,20	4,0	0,16	6,4	0,25	1,0	0,039	6800	460
JIS											
¼"	MG.EM 14J	30,5	1,20	4,4	0,17	6,4	0,25	1,0	0,039	5600	380
⅜"	MG.EM 38J	32,8	1,29	7,5	0,29	6,4	0,25	1,0	0,039	3500	240

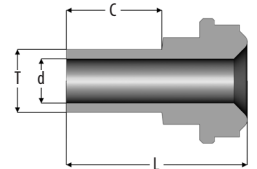


1) On request in Alloy C-22 (HC22) material
2) Minimum quantity

GLANDS | AUTOMATIC TUBE WELD SHORT FEMALE GLAND

TUBE SIZE

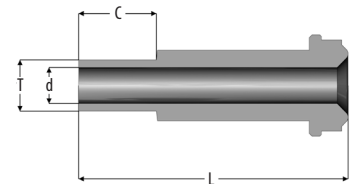
Tube O.D.	Part number	L		d		C		Nominal Wall Thickness		Working Pressure	
		mm	inch	mm	inch	mm	inch	mm	inch	PSIG	bar
FRACTIONAL											
¼"	EMCS 14 AB	18,3	0,72	4,6	0,18	9,6	0,38	0,89	0,035	5100	350
½"	EMCS 12 AB	18,8	0,74	10,2	0,40	9,6	0,38	1,25	0,049	3500	240
JIS											
¼"	EMCS 14J AB	18,3	0,72	4,4	0,17	9,6	0,38	1,0	0,039	5600	380
⅜"	EMCS 38J AB	18,8	0,74	7,5	0,29	9,6	0,38	1,0	0,039	3500	240



GLANDS | AUTOMATIC TUBE WELD MALE GLAND

TUBE SIZE

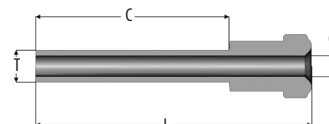
Tube O.D.	Part number	L		d		C		Nominal Wall Thickness		Working Pressure	
		mm	inch	mm	inch	mm	inch	mm	inch	PSIG	bar
FRACTIONAL											
¼"	EMCA 14 AB	33,3	1,31	4,6	0,18	9,1	0,36	0,89	0,035	5100	350
¼"	EMS 14 AB	33,5	1,32	4,6	0,18	9,6	0,38	0,89	0,035	5100	350
½"	EMS 12 AB	33,8	1,33	10,2	0,40	9,6	0,38	1,25	0,049	3500	240
JIS											
¼"	EMS 14J AB	33,5	1,32	4,4	0,17	9,6	0,38	1,0	0,039	5600	380
⅜"	EMS 38J AB	35,8	1,41	7,5	0,29	9,6	0,38	1,0	0,039	3500	240



GLANDS | AUTOMATIC TUBE WELD SHORT FEMALE GLAND

TUBE SIZE

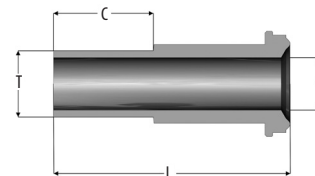
Tube O.D.	Part number	L		d		C		Nominal Wall Thickness		Working Pressure	
		mm	inch	mm	inch	mm	inch	mm	inch	PSIG	bar
FRACTIONAL											
½"	EMC 18 AB ²	27,4	1,08	2,1	0,08	19,1	0,75	0,71	0,028	5100	350
¼"	EMC 14 AB ²	27,9	1,10	4,6	0,18	19,1	0,75	0,89	0,035	5100	350
⅜"	EMC 38 AB ²	28,4	1,12	7,7	0,30	19,1	0,75	0,89	0,035	3300	220
½"	EMC 12 AB ²	28,4	1,12	10,2	0,40	19,1	0,75	1,25	0,049	3500	240
METRIC											
6 mm	EMC 6M AB	29,5	1,16	4,0	0,16	19,1	0,75	1,0	0,039	6800	460
8 mm	EMC 8M AB	29,5	1,16	6,0	0,24	19,1	0,75	1,0	0,039	4800	330
10 mm	EMC 10M AB	29,5	1,16	8,0	0,31	19,1	0,75	1,0	0,039	3500	240
12 mm	EMC 12M AB	29,5	1,16	10,0	0,39	19,1	0,75	1,0	0,039	3100	210
18 mm	EMC 18M AB ²	31,0	1,22	15,0	0,59	19,1	0,75	1,5	0,059	3000	200
JIS											
¼"	EMC 14J AB	27,9	1,10	4,4	0,17	19,1	0,75	1,0	0,039	5600	380
⅜"	EMC 38J AB	28,4	1,12	7,5	0,29	19,1	0,75	1,0	0,039	3300	240



GLANDS | AUTOMATIC TUBE WELD MALE GLAND

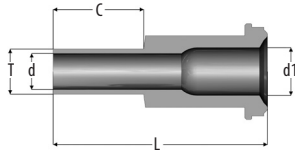
TUBE SIZE

Tube O.D.	Part number	L		d		C		Nominal Wall Thickness		Working Pressure	
		mm	inch	mm	inch	mm	inch	mm	inch	PSIG	bar
FRACTIONAL											
⅝"	EM 18 AB ²⁾	36,1	1,42	2,1	0,08	19,1	0,75	0,71	0,028	5100	350
¼"	EM 14 AB ¹	43,2	1,70	4,6	0,18	19,1	0,75	0,89	0,035	5100	350
⅜"	EM 38 AB	45,5	1,79	7,7	0,30	19,1	0,75	0,89	0,035	3300	220
½"	EM 12 AB	45,5	1,79	10,2	0,40	19,1	0,75	1,25	0,049	3500	240
¾"	EM 34 AB	51,6	2,03	16,5	0,65	19,1	0,75	1,25	0,049	2400	160
1"	EM 100 AB	58,9	2,32	22,1	0,87	19,1	0,75	1,65	0,065	2400	160
METRIC											
6 mm	EM 6M AB	43,1	1,70	4,0	0,16	19,1	0,75	1,0	0,039	6800	460
8 mm	EM 8M AB	43,1	1,70	6,0	0,24	19,1	0,75	1,0	0,039	4800	330
10 mm	EM 10M AB	45,5	1,79	8,0	0,31	19,1	0,75	1,0	0,039	3500	240
12 mm	EM 12M AB	45,5	1,79	10,0	0,39	19,1	0,75	1,0	0,039	3100	210
18 mm	EM 18M AB	51,6	2,03	15,0	0,59	19,1	0,75	2,5	0,059	3100	200
JIS											
¼"	EM 14J AB	43,2	1,70	4,4	0,17	19,1	0,75	1,0	0,039	5600	380
⅜"	EM 38J AB	45,5	1,79	7,5	0,29	19,1	0,75	1,0	0,039	3300	240



1) On request in Alloy C-22 (HC22) material
2) Minimum quantity

GLANDS | AUTOMATIC TUBE WELD REDUCING MALE GLAND



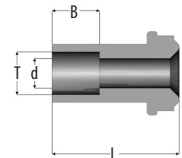
TUBE SIZE - FRACTIONAL

T1 Tube O.D.	T Tube O.D.	Part number	L		d1		d		C		Nominal Wall Thickness		Working Pressure	
			mm	inch	mm	inch	mm	inch	mm	inch	mm	inch	PSIG	bar
1/2"	1/4"	EMR 12 14 AB	45,5	1,79	10,2	0,40	4,6	0,18	19,1	0,75	0,89	0,035	3500	240
1/2"	3/8"	EMR 12 38 AB	45,5	1,79	10,2	0,40	7,7	0,30	19,1	0,75	0,89	0,035	3300	220
1/2"	1/4"	EMCR 12 14 AB	28,4	1,12	10,2	0,40	4,6	0,18	19,1	0,75	0,89	0,035	3500	240
1/2"	3/8"	EMCR 12 38 AB ¹	28,4	1,12	10,2	0,40	7,7	0,30	19,1	0,75	0,89	0,035	3300	220

GLANDS | SHORT SOCKET WELD GLAND

TUBE SIZE - FRACTIONAL

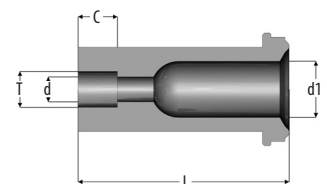
T Tube O.D.	Part number	L		d		B	Working Pressure	
		mm	inch	mm	inch		PSIG	bar
1/4"	EFCS 14	12,7	0,50	4,6	0,18	7,9	5500	370
1/4"	EFC 14	19,1	0,75	4,6	0,18	7,1	5500	370



GLANDS | REDUCING SOCKET WELD GLAND

TUBE SIZE - FRACTIONAL

T1 Tube O.D.	T Tube O.D.	Part number	L		d1		d		B	Working Pressure	
			mm	inch	mm	inch	mm	inch		PSIG	bar
1/4"	1/8"	RSW 14 18	33,3	1,31	4,6	0,18	2,1	0,08	2,5	8000	550
1/2"	1/4"	RSW 12 14	38,0	1,50	10,2	0,40	4,6	0,18	7,1	3500	240

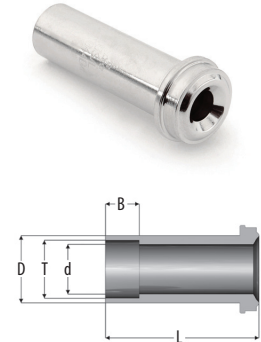


1) On request in Alloy C-22 (HC22) material

GLANDS | SOCKET WELD GLAND

TUBE SIZE - FRACTIONAL

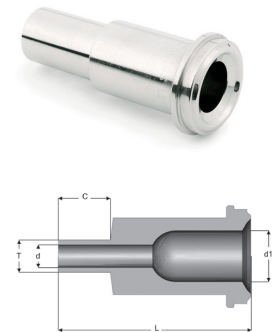
T Tube O.D.	Part number	L		d		D	B	Working Pressure	
		mm	inch	mm	inch			PSIG	bar
1/16"	EF 116 ^{1,2}	17,8	0,70	1,5	0,06	3,3	2,5	9000	620
1/8"	EF 18	17,8	0,70	2,1	0,08	5,1	2,5	7100	480
1/4"	EF 14	33,3	1,31	4,6	0,18	8,9	7,1	5500	370
3/8"	EF 38	38,1	1,50	7,7	0,30	15,2	8,0	3500	240
1/2"	EF 12	38,1	1,50	10,2	0,40	15,2	9,6	3000	200
3/4"	EF 34	50,8	2,00	16,5	0,65	22,4	11,2	2800	190
1"	EF 100	56,4	2,22	22,1	0,87	30,2	15,7	2400	160



GLANDS | MALE WELD GLAND

TUBE SIZE - FRACTIONAL

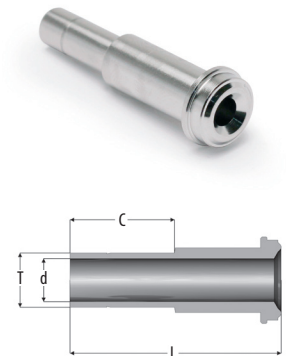
T1 Tube O.D.	T Tube O.D.	Part number	L		d1		d		C		Working Pressure	
			mm	inch	mm	inch	mm	inch	mm	inch	PSIG	bar
1/8"	1/8"	EM 18	17,8	0,70	1,5	0,06	2,1	0,08	7,1	0,28	9000	620
1/4"	1/8"	EMR 14 18	33,3	1,31	1,5	0,06	2,1	0,08	7,1	0,28	8000	550
1/4"	1/4"	EM 14	33,3	1,31	3,0	0,12	4,6	0,18	10,4	0,41	8000	550
1/2"	1/4"	EMR 12 14	38,1	1,50	3,0	0,12	4,6	0,18	10,4	0,41	3500	240
1/2"	3/8"	EM 38	38,1	1,50	7,1	0,28	7,7	0,30	10,4	0,41	3500	240
1/2"	1/2"	EM 12	38,1	1,50	10,2	0,40	10,2	0,40	12,7	0,50	3500	240
3/4"	3/4"	EM 34	50,8	2,00	13,5	0,53	16,5	0,65	15,7	0,62	3000	200
1"	1"	EM 100	56,4	2,22	19,1	0,75	22,1	0,87	20,6	0,81	2400	160



GLANDS | TUBE ADAPTER

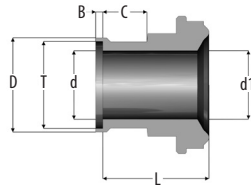
TUBE SIZE - FRACTIONAL

T1 Tube O.D.	Part number	L		d		C		Working Pressure	
		mm	inch	mm	inch	mm	inch	PSIG	bar
1/4"	TA 14	41,0	1,61	4,6	0,18	16,2	0,64	2400	160
3/8"	TA 38	46,0	1,81	7,7	0,30	17,8	0,70	1500	100
1/2"	TA 12	49,3	1,94	10,2	0,40	24,4	0,96	1500	100



1) Use DNI 18 and FN 18 or MN 18
2) Minimum quantity

GLANDS | MINI SHORT FEMALE GLAND



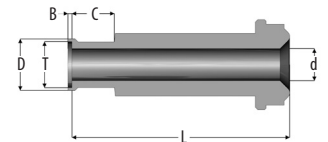
TUBE SIZE - FRACTIONAL

T1 Tube O.D.	T Tube O.D.	Part number	L		d1		d		D	B	C		Nominal Wall Thickness		Working Pressure	
			mm	inch	mm	inch	mm	inch			mm	inch	mm	inch	PSIG	bar
1/4"	1/8"	MG.EFC 14 18	15,6	0,61	4,6	0,18	2,1	0,08	3,8	0,3	6,4	0,25	0,71	0,028	5100	350
1/4"	1/4"	MG.EFC 14	15,7	0,62	4,6	0,18	4,6	0,18	7,4	0,5	6,4	0,25	0,89	0,035	5100	350
3/8"	3/8"	MG.EFC 38	16,5	0,65	7,7	0,30	7,7	0,30	10,5	0,8	6,4	0,25	0,89	0,035	3300	220
1/2"	1/2"	MG.EFC 12	16,7	0,66	10,2	0,40	10,2	0,40	14,0	1,0	6,4	0,25	1,25	0,049	3500	240

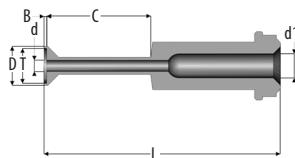
GLANDS | MINI MALE GLAND

TUBE SIZE - FRACTIONAL

T Tube O.D.	Part number	L		d		D	B	C		Nominal Wall Thickness		Working Pressure	
		mm	inch	mm	inch			mm	inch	mm	inch	PSIG	bar
1/8"	MG.EF 18	23,8	0,94	2,1	0,08	3,8	0,5	6,4	0,25	0,71	0,028	5100	350
1/4"	MG.EF 14	31,0	1,22	4,6	0,18	7,4	0,5	6,4	0,25	0,89	0,035	5100	350
1/2"	MG.EF 12	33,8	1,33	10,2	0,40	14,0	1,0	6,4	0,25	1,3	0,049	3500	240



GLANDS | AUTOMATIC TUBE WELD REDUCING GLAND



TUBE SIZE - FRACTIONAL

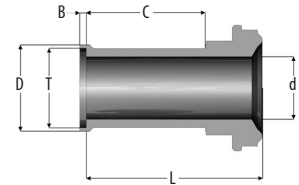
T Tube O.D.	Part number	L		d1		d		D	B	C		Nominal Wall Thickness		Working Pressure	
		mm	inch	mm	inch	mm	inch			mm	inch	mm	inch	PSIG	bar
1/4"	EFR 14 18 AB	43,5	1,71	4,6	0,18	2,1	0,08	3,8	0,5	19,1	0,75	0,71	0,028	5100	350
1/4"	EFCR 14 18 AB	28,2	1,11	4,6	0,18	2,1	0,08	3,8	0,5	19,1	0,75	0,71	0,028	5100	350
1/2"	EFR 12 14 AB	46,2	1,82	10,2	0,40	4,6	0,18	7,4	0,5	19,1	0,75	0,89	0,035	3500	240
1/2"	EFR 12 38 AB	46,2	1,82	10,2	0,40	7,7	0,30	14,0	0,8	19,1	0,75	0,89	0,035	3500	240

GLANDS | AUTOMATIC TUBE WELD SHORT FEMALE GLAND

TEESING
WWW.TEESING.COM

TUBE SIZE

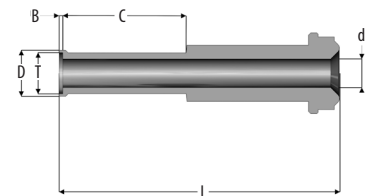
T Tube O.D.	Part number	L		d		D	B	C		Nominal Wall Thickness		Working Pressure	
		mm	inch	mm	inch			mm	mm	mm	inch	mm	inch
FRACTIONAL													
¼"	EFC 14 AB	28,4	1,12	4,6	0,18	7,4	0,5	19,1	0,75	0,89	0,035	5100	350
⅜"	EFC 38 AB	29,2	1,15	7,7	0,30	10,5	0,8	19,1	0,75	0,89	0,035	3300	220
½"	EFC 12 AB	29,5	1,16	10,2	0,40	14,0	1,0	19,1	0,75	1,25	0,049	3500	240
METRIC													
6 mm	EFC 6M AB	30,0	1,18	4,0	0,16	6,9	0,5	19,1	0,75	1,0	0,039	6800	460
8 mm	EFC 8M AB	30,2	1,19	6,0	0,24	8,9	0,8	19,1	0,75	1,0	0,039	4800	330
10 mm	EFC 10M AB	31,0	1,22	8,0	0,31	10,9	0,8	19,1	0,75	1,0	0,039	3500	240
12 mm	EFC 12M AB	30,5	1,20	10,0	0,39	13,2	1,0	19,1	0,75	1,0	0,039	3100	210
JIS													
¼"	EFC 14J AB	43,7	1,72	4,4	0,17	7,4	0,5	19,1	0,75	1,0	0,039	5600	380
⅜"	EFC 38J AB	46,2	1,82	7,5	0,29	10,5	0,8	19,1	0,75	1,0	0,039	3500	240



GLANDS | AUTOMATIC TUBE WELD MALE GLAND

TUBE SIZE

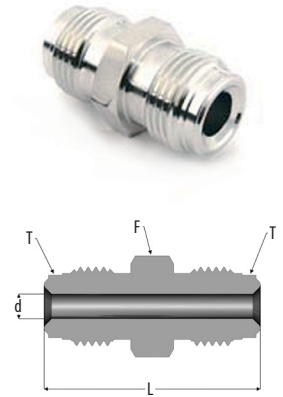
T Tube O.D.	Part number	L		d		D	B	C		Nominal Wall Thickness		Working Pressure	
		mm	inch	mm	inch			mm	mm	mm	inch	mm	inch
FRACTIONAL													
¼"	EF 14 AB	43,7	1,72	4,6	0,18	7,4	0,5	19,1	0,75	0,89	0,035	5100	350
⅜"	EF 38 AB	46,2	1,82	7,7	0,30	10,5	0,8	19,1	0,75	0,89	0,035	3300	220
½"	EF 12 AB	46,5	1,83	10,2	0,40	14,0	1,0	19,1	0,75	1,25	0,049	3500	240
¾"	EF 34 AB	52,6	2,07	16,5	0,65	20,3	1,0	19,1	0,75	1,25	0,049	2400	160
½"	EF 100 AB	65,3	2,57	22,1	0,87	26,9	1,0	24,4	0,75	1,65	0,065	2400	160
METRIC													
6 mm	EF 6M AB	43,7	1,72	4,0	0,16	6,9	0,5	19,1	0,75	1,0	0,039	6800	460
8 mm	EF 8M AB	44,0	1,73	6,0	0,24	8,9	0,8	19,1	0,75	1,0	0,039	4800	330
12 mm	EF 12M AB	46,5	1,83	10,0	0,39	13,2	1,0	19,1	0,75	1,0	0,039	3500	240
18 mm	EF 18M AB	52,6	2,07	15,0	0,59	19,2	1,0	19,1	0,75	1,5	0,059	3100	210
JIS													
¼"	EF 14J AB	43,7	1,72	4,4	0,17	7,4	0,5	19,1	0,75	1,0	0,039	5600	380
⅜"	EF 38J AB	46,2	1,83	7,5	0,29	10,5	0,8	19,1	0,75	1,0	0,039	3500	240



UNIONS | DOUBLE MALE UNION

TUBE SIZE - FRACTIONAL

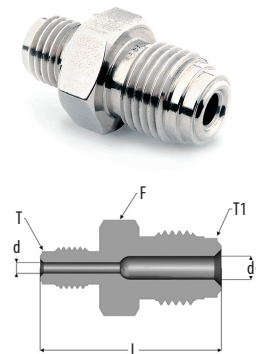
T Tube O.D.	Part number	L		d		F		Working Pressure	
		mm	inch	mm	inch	mm	inch	PSIG	bar
1/8"	UM 18 ¹	28,7	1,13	2,1	0,08	9,5	0,37	9000	620
1/4"	UM 14 ¹	39,4	1,55	4,6	0,18	15,9	0,63	8000	550
1/2"	UM 12 ¹	46,7	1,84	10,2	0,40	23,8	0,94	3500	240
3/4"	UM 34 ¹	62,0	2,44	16,5	0,65	33,3	1,31	3000	200
1"	UM 100 ¹	65,8	2,59	22,1	0,87	41,3	1,63	2400	160



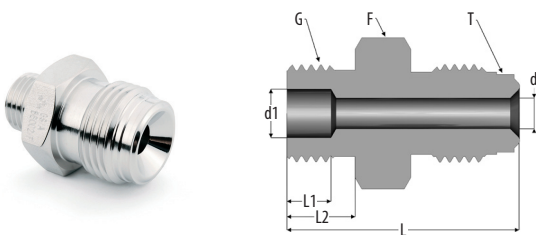
UNIONS | DOUBLE MALE REDUCING UNION

TUBE SIZE - FRACTIONAL

T1 Tube O.D.	T Tube O.D.	Part number	L		d1		d		F		Working Pressure	
			mm	inch	mm	inch	mm	inch	mm	inch	PSIG	bar
1/4"	1/8"	DMRU 14 18 ¹	34,8	1,37	2,1	0,08	4,6	0,18	15,9	0,63	8000	550
1/2"	1/4"	DMRU 12 14 ¹	43,4	1,71	4,6	0,18	10,2	0,40	23,8	0,94	3500	240



UNIONS | STRAIGHT THREAD MALE CONNECTOR, O-RING



TUBE SIZE - FRACTIONAL

T Tube O.D.	Part number	L		L1	L2	d1		d		F	G	O-ring Size N°	Working Pressure	
		mm	inch			mm	inch	mm	inch				mm	inch
1/4"	STMC 14 ^{1,2}	33,8	1,33	6,4	9,9	7,1	0,28	4,6	0,18	19,1	9-16"-18	FLUOROCARBON 906	4500	310
1/2"	STMC 12 12 ^{1,2}	42,2	1,66	10,2	12,7	15	0,59	7,1	0,28	25,4	7/8"-14	FLUOROCARBON 910	3500	240
1/2"	STMC 12 14 ^{1,2}	37,6	1,48	6,4	9,9	7,1	0,28	7,1	0,28	23,8	3/4"-18	FLUOROCARBON 906	3500	240

1) These fittings should be assembled only with rotating male or female nuts
2) O-rings fluorocarbon FKM standard, other materials on request

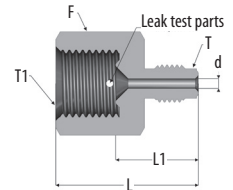
UNIONS | REDUCING ADAPTER

TEESING

WWW.TEESING.COM

TUBE SIZE - FRACTIONAL

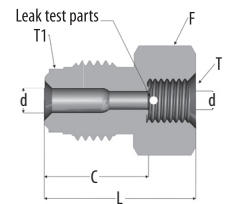
T1 Tube O.D.	T Tube O.D.	Part number	L		L1	d		F		Working Pressure	
			mm	inch		mm	inch	mm	PSIG	bar	
1/4"	1/8"	RA 14 18 ¹	30,2	1,19	17,5	2,1	0,08	19,1	8000	550	
1/2"	1/4"	RA 12 14 ¹	35,8	1,41	21,6	4,6	0,18	27,0	3500	240	



UNIONS | REDUCING ADAPTER

TUBE SIZE - FRACTIONAL

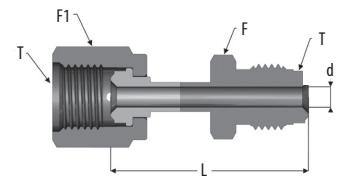
T1 Tube O.D.	T Tube O.D.	Part number	L		L1	d		F		Working Pressure	
			mm	inch		mm	inch	mm	PSIG	bar	
1/4"	1/8"	RB 14 18 ¹	36,9	1,06	19,3	3,6	0,14	15,9	8000	550	
1/2"	1/4"	RB 12 14 ¹	35,8	1,41	23,1	6,3	0,25	23,8	3500	240	



UNIONS | MALE FEMALE UNION

TUBE SIZE - FRACTIONAL

T Tube O.D.	Part number	L		d		F	F1	Working Pressure	
		mm	inch	mm	inch			PSIG	bar
1/4"	U 14 FM ¹	43,4	1,71	4,6	0,18	15,9	19,1	5100	350

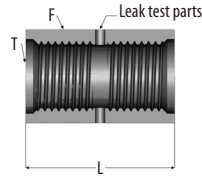


1) These fittings should be assembled only with rotating male or female nuts

UNIONS | COUPLING

TUBE SIZE - FRACTIONAL

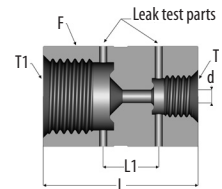
T Tube O.D.	Part number	L		F
		mm	inch	mm
1/8"	CG 18 ¹	16,8	0,66	11,1
1/4"	CG 14 ¹	30,2	1,19	19,1
1/2"	CG 12 ¹	33,3	1,31	27,0
3/4"	CG 34 ¹	42,7	1,68	38,1
1"	CG 100 ¹	51,8	2,04	44,5



UNIONS | DOUBLE FEMALE REDUCING UNION

TUBE SIZE - FRACTIONAL

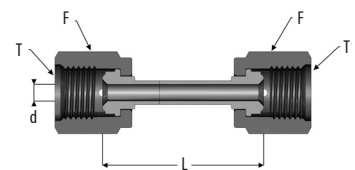
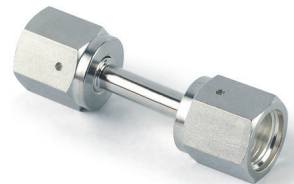
T1 Tube O.D.	T Tube O.D.	Part number	L		L1	d		F	Working Pressure	
			mm	inch		mm	inch		PSIG	bar
1/4"	1/8"	DFRU 14 18 ¹	29,5	1,16	9,1	3,3	0,13	19,1	8000	550
1/2"	1/4"	DFRU 12 14 ¹	35,8	1,41	8,9	6,3	0,25	27,0	3500	240



UNIONS | DOUBLE FEMALE UNION

TUBE SIZE - FRACTIONAL

T Tube O.D.	Part number	L		d		F	Working Pressure	
		mm	inch	mm	inch		PSIG	bar
1/4"	U 14 F ²	43,4	1,71	4,6	0,18	19,1	5100	350
1/2"	U 12 F ²	46,7	1,84	10,2	0,40	27,0	3500	240

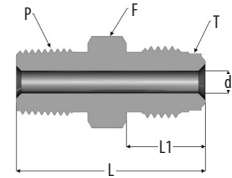


1) These fittings should be assembled only with rotating male or female nuts
2) On request it can be delivered with a double female, reducing union 1/2" F and 1/4" F (Part number UR 12 14 F)

UNIONS | MALE CONNECTOR

TUBE SIZE - FRACTIONAL

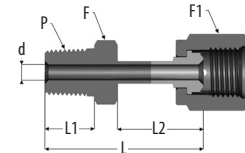
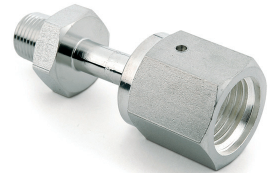
T Tube O.D.	P NPT	Part number	L		L1	d		F	Working Pressure	
			mm	inch	mm	mm	inch		mm	PSIG
1/8"	1/16"	UM 18 NPT 116 ^{1,2}	27,2	1,07	9,6	2,1	0,08	9,5	9000	620
1/8"	1/8"	NPT 18 ¹	27,2	1,07	9,6	2,1	0,08	9,5	9000	620
1/4"	1/8"	UM 14 NPT 18 ¹	33,3	1,31	9,6	4,6	0,18	15,9	8000	550
1/4"	1/4"	NPT 14 ¹	37,8	1,49	14,2	4,6	0,18	15,9	8000	550
1/2"	3/8"	UM 12 NPT 38 ¹	41,9	1,65	14,2	9,7	0,38	23,8	3500	240
1/2"	1/2"	NPT 12 ¹	46,7	1,84	19,1	10,2	0,40	23,8	3500	240
3/4"	3/4"	NPT 34 ¹	55,6	2,19	19,1	15,8	0,62	33,3	3000	200
1"	1"	NPT 100 ¹	62,7	2,47	22,3	22,3	0,88	41,3	2400	160



UNIONS | FEMALE CONNECTOR

TUBE SIZE - FRACTIONAL

T Tube O.D.	T Tube O.D.	Part number	L		L1	L2	d		F	F1	Working Pressure	
			mm	inch	mm	mm	mm	inch			mm	mm
1/4"	1/8"	UF 14 NPT 18	40,1	1,58	9,6	24,1	4,6	0,18	15,9	19,1	5100	350
1/4"	1/4"	NPT 14 F	45,5	1,79	14,2	23,4	4,6	0,18	15,9	19,1	5100	350
1/2"	3/8"	UF 12 NPT 38	48,0	1,89	14,2	25,4	9,9	0,39	23,8	27,0	3500	240
1/2"	1/2"	NPT 12 F	53,1	2,09	19,1	25,6	9,9	0,39	23,8	27,0	3500	240

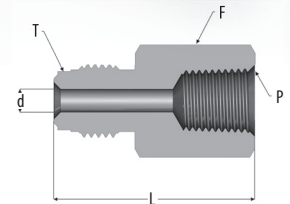


1) These fittings should be assembled only with rotating male or female nuts
2) Minimum quantity

UNIONS | FEMALE CONNECTOR

TUBE SIZE - FRACTIONAL

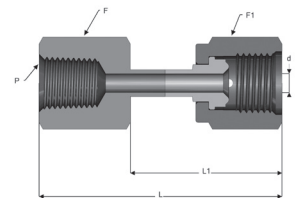
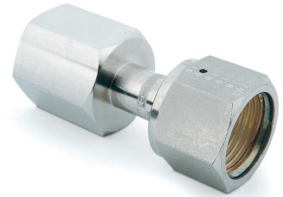
T Tube O.D.	P NPT	Part number	L		d		F	Working Pressure	
			mm	inch	mm	inch		PSIG	bar
1/8"	1/16"	UM 18 NPTF 116 ¹	27,9	1,10	2,3	0,09	11,1	6700	460
1/8"	1/8"	UM 18 NPTF 18 ¹	30,2	1,19	2,3	0,09	14,3	6500	440
1/4"	1/8"	UM 14 NPTF 18 ¹	35,8	1,41	4,6	0,18	15,9	8000	550
1/4"	1/4"	UM 14 NPTF 14 ¹	39,1	1,54	4,6	0,18	19,1	6600	450
1/2"	3/8"	UM 12 NPTF 38 ¹	44,7	1,76	10,2	0,40	23,8	3500	240
1/2"	1/2"	UM 12 NPTF 12 ¹	50,5	1,99	10,2	0,40	27,0	3500	240
3/4"	3/4"	UM 34 NPTF 34 ¹	59,7	2,36	15,7	0,62	33,3	3000	200
1"	1"	UM 100 NPTF 100 ¹	63,8	2,51	22,1	0,87	41,3	2400	160



UNIONS | FEMALE CONNECTOR

TUBE SIZE - FRACTIONAL

T Tube O.D.	P NPT	Part number	L		L1	d		F	F1	Working Pressure	
			mm	inch		mm	inch			mm	mm
1/4"	1/4"	UF 14 NPTF 14	45,2	1,78	23,4	4,6	0,18	19,1	19,1	5100	350
1/2"	3/8"	UF 12 NPTF 38	49,5	1,95	26,9	10,2	0,40	27,0	27,0	3300	220
1/2"	1/2"	UF 12 NPTF 12	55,4	2,18	26,4	10,2	0,40	27,0	27,0	3500	240



1) These fittings should be assembled only with rotating male or female nuts

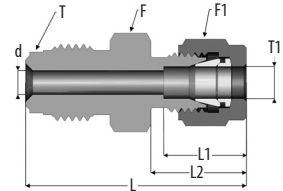
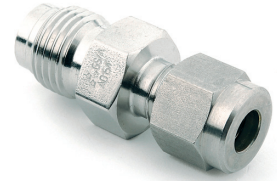
UNIONS | TUBE FITTING MALE

TEESING

WWW.TEESING.COM

TUBE SIZE - FRACTIONAL

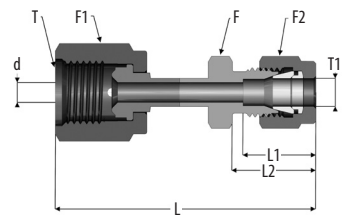
T Tube O.D.	T1 Tube O.D.	Part number	L		L1	L2	d		F	F1	Working Pressure	
			mm	inch	mm	mm	mm	inch	mm	mm	PSIG	bar
1/4"	1/8"	UM 14 18 DB 1	38,9	1,53	12,7	15,2	2,1	0,08	15,9	11,1	8000	550
1/4"	1/4"	UM 14 14 DB 1	41,1	1,62	15,2	17,8	4,6	0,18	15,9	14,3	8000	550
1/2"	3/8"	UM 12 38 DB 1	46,7	1,84	16,8	19,3	7,7	0,30	23,8	17,5	3500	240
1/2"	1/2"	UM 12 12 DB 1	49,5	1,95	22,9	21,8	10,2	0,40	23,8	22,2	3500	240



UNIONS | TUBE FITTING FEMALE CONNECTOR

TUBE SIZE - FRACTIONAL

T1 Tube O.D.	T Tube O.D.	Part number	L		L1	L2	d		F	F1	F2	Working Pressure	
			mm	inch	mm	mm	mm	inch	mm	mm	mm	PSIG	bar
1/4"	1/4"	UF 14 14 DB	49,3	1,94	15,2	17,8	4,6	0,18	15,9	19,1	14,3	5100	350
1/2"	3/8"	UF 12 38 DB	50,0	1,97	16,8	19,3	7,7	0,30	23,8	27,0	17,5	3300	220
1/2"	1/2"	UF 12 12 DB	56,6	2,23	22,9	21,8	10,2	0,40	23,8	27,0	22,2	3500	240

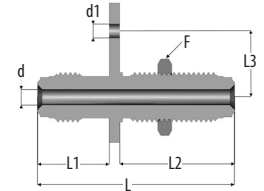


1) These fittings should be assembled only with rotating male or female nuts

BULKHEAD UNIONS | BULKHEAD UNION

TUBE SIZE - FRACTIONAL

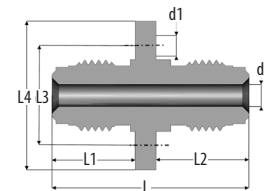
T Tube O.D.	Part number	L		L1	L2	L3	d		dt	F	Panel hole size	Working Pressure	
		mm	inch	mm	mm	mm	mm	inch	mm	mm	mm	PSIG	bar
¼"	BUP 14 ¹	56,6	2,23	20,5	33,0	19,0	4,6	0,18	4,0	19,1	15,1	8000	550



BULKHEAD UNIONS | BULKHEAD UNION

TUBE SIZE - FRACTIONAL

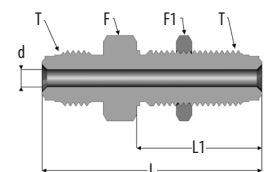
T Tube O.D.	Part number	L		L1	L2	L3	L4	d		d1	Working Pressure	
		mm	inch	mm	mm	mm	mm	mm	inch	mm	PSIG	bar
¼"	TC 14 ¹	39,8	1,57	16,8	18,8	30,0	20,0	4,6	0,18	3,5	8000	550



BULKHEAD UNIONS | BULKHEAD UNION

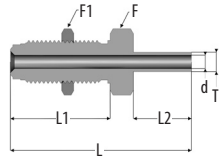
TUBE SIZE - FRACTIONAL

T Tube O.D.	Part number	L		L1	d		F	F1	Panel hole size	Max panel thickness		Working Pressure	
		mm	inch	mm	mm	inch	mm	mm	inch	mm	inch	PSIG	bar
¼"	BU 14 ¹	56,6	2,23	33,0	4,6	0,18	19,1	19,1	15,1	11,1	0,44	8000	550
¼"	BUS 14 ¹	46,2	1,82	25,1	4,6	0,18	19,1	19,1	15,1	3,3	0,13	8000	550
½"	BU 12 ¹	66,3	2,61	37,6	10,2	0,40	27,0	27,0	23,0	12,7	0,50	3500	240
½"	BUS 12 ¹	54,4	2,14	28,2	10,2	0,40	27,0	27,0	23,0	3,3	0,13	3500	240



1) These fittings should be assembled only with rotating male or female nuts

BULKHEAD UNIONS | BUTTWELD BULKHEAD UNION

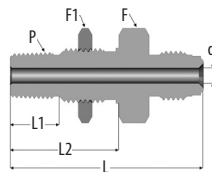


TUBE SIZE - FRACTIONAL

T Tube O.D.	Part number	L		L1	d		C		F	F1	Panel hole size	Max panel thickness	Working Pressure	
		mm	inch	mm	mm	inch	mm	inch	mm	mm	mm	mm	PSIG	bar
1/4"	BU 14 ABW ¹	59,9	2,36	33,0	4,6	0,18	19,1	0,75	19,1	19,1	15,1	11,1	5100	350
1/4"	BUS 14 ABW ¹	49,5	1,95	25,1	4,6	0,18	19,1	0,75	19,1	19,1	15,1	3,3	5100	350

① These fittings should be assembled only with rotating male or female nuts

BULKHEAD UNIONS | BULKHEAD NPT UNION

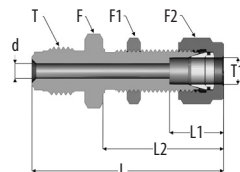


TUBE SIZE - FRACTIONAL

T Tube O.D.	P NPT	Part number	L		d		L1	L2	F	F1	Panel hole size	Max panel thickness	Working Pressure	
			mm	inch	mm	inch	mm	mm	mm	mm	mm	mm	PSIG	bar
1/4"	1/4"	BU 14 NPT 14 ¹	56,1	2,21	4,6	0,18	14,2	31,5	23,8	23,8	16,7	9,7	8000	550
1/2"	1/4"	BU 12 NPT 14 ¹	59,4	2,34	10,2	0,40	14,2	31,5	23,8	23,8	16,7	9,7	3500	240

① These fittings should be assembled only with rotating male or female nuts

BULKHEAD UNIONS | TUBE FITTING BULKHEAD CONNECTOR



TUBE SIZE - FRACTIONAL

T Tube O.D.	T1 Tube O.D.	Part number	L		L1	L2	d		F	F1	F2	Working Pressure	
			mm	inch	mm	inch	mm	mm	mm	mm	mm	PSIG	bar
1/4"	1/4"	BU 14 14 DB ¹	57,2	2,25	15,2	33,5	4,6	0,18	19,1	19,1	14,3	5100	350
1/4"	1/4"	BUS 14 14 DB ¹	47,8	1,88	15,2	26,7	4,6	0,18	19,1	19,1	14,3	5100	350
1/2"	3/8"	BU 12 38 DB ¹	64,5	2,54	16,8	36,8	7,7	0,30	23,8	23,8	17,5	3300	220
1/2"	1/2"	BU 12 12 DB ¹	69,6	2,74	22,9	41,9	10,2	0,40	23,8	23,8	22,2	3500	240

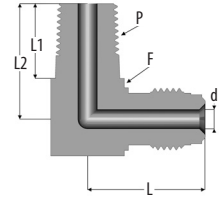
① These fittings should be assembled only with rotating male or female nuts

1) These fittings should be assembled only with rotating male or female nuts

ELBOWS | MALE NPT ELBOW

TUBE SIZE - FRACTIONAL

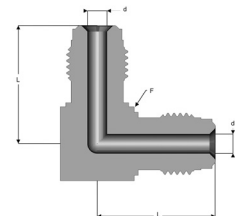
T Tube O.D.	P NPT	Part number	L		L1	L2	d		F	Working Pressure	
			mm	inch			mm	inch		mm	PSIG
1/4"	1/8"	E 14 NPT 18 ¹	27,2	1,07	9,6	22,1	4,6	0,18	17,0	80000	550
1/4"	1/4"	E 14 NPT 14 ¹	27,2	1,02	14,2	26,7	4,6	0,18	17,0	80000	550
1/2"	3/8"	E 12 NPT 14 ¹	36,8	1,45	14,2	32,0	10,2	0,40	24,0	3500	240
1/2"	1/2"	E 12 NPT 12 ¹	36,8	1,45	19,1	36,8	10,2	0,40	24,0	3500	240



ELBOWS | UNION ELBOW

TUBE SIZE - FRACTIONAL

T Tube O.D.	Part number	L		d		F	Working Pressure	
		mm	inch	mm	inch		mm	PSIG
1/8"	E 18 ¹	22,6	0,89	2,1	0,08	12	9000	620
1/4"	E 14 ¹	27,2	1,07	4,6	0,18	17	8000	550
1/2"	E 12 ¹	36,8	1,45	10,2	0,40	24	3500	240
3/4"	E 34 ¹	48,8	1,92	16,5	0,65	35	3000	200
1"	E 100 ¹	50,8	2,00	22,1	0,87	41	2400	160



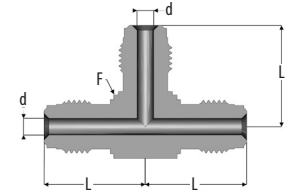
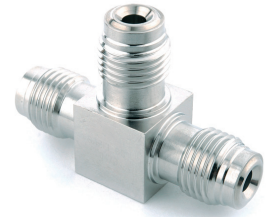
1) These fittings should be assembled only with rotating male or female nuts

TEES | UNION TEE



TUBE SIZE - FRACTIONAL

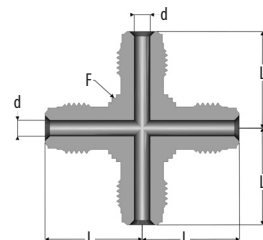
T Tube O.D.	Part number	L		d		F	Working Pressure	
		mm	inch	mm	inch		PSIG	bar
1/8"	T 18 ¹	22,6	0,89	2,1	0,08	12	9000	620
1/4"	T 14 ¹	27,2	1,07	4,6	0,18	17	8000	550
1/2"	T 12 ¹	36,8	1,45	10,2	0,40	24	3500	240
3/4"	T 34 ¹	48,8	1,92	16,5	0,65	35	3000	200
1"	T 100 ¹	50,8	2,00	22,1	0,87	41	2400	160



CROSSES | UNION CROSS

TUBE SIZE - FRACTIONAL

T Tube O.D.	Part number	L		d		F	Working Pressure	
		mm	inch	mm	inch		PSIG	bar
1/8"	C 18 ¹	22,6	0,89	2,1	0,08	12	9000	620
1/4"	C 14 ¹	27,2	1,07	4,6	0,18	17	8000	550
1/2"	C 12 ¹	36,8	1,45	10,2	0,40	24	3500	240
3/4"	C 34 ¹	48,8	1,92	16,5	0,65	35	3000	200
1"	C 100 ¹	50,8	2,00	22,1	0,87	41	2400	160



1) These fittings should be assembled only with rotating male or female nuts