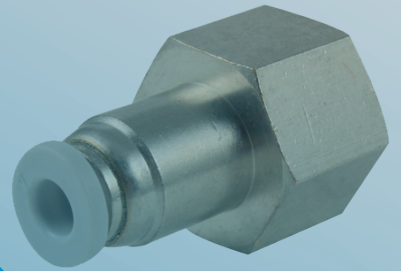


TEESING



**PUSH-IN CONNECTORS
PLASTIC**

WWW.TEESING.COM

PUSH-IN CONNECTORS

• INDEX	2
• TECHNICAL INFORMATION	3
• STRAIGHT MALE CONNECTOR	4
• STRAIGHT FEMALE CONNECTOR	5
• ELBOW MALE CONNECTOR	5 - 7
• Y MALE CONNECTOR	8
• TEE MALE CONNECTOR	8 - 9
• STRAIGHT CONNECTOR	9
• ELBOW CONNECTOR	10
• TEE CONNECTOR	10
• Y-CONNECTOR	10
• CROSS CONNECTOR	11
• BULKHEAD CONNECTOR	11
• STRAIGHT PLUG-IN CONNECTOR	12
• ELBOW PLUG-IN CONNECTOR	12
• Y PLUG-IN CONNECTOR	12
• PLUG	13
• BANJO CONNECTOR	13
• MANIFOLD CONNECTOR	14
• VALVE MANUAL	14-15
• FLOW REGULATOR	16

TECHNICAL INFORMATION

PRODUCT NAME

One touch + push-in fittings

PRODUCT RANGE

16 Bar rated

OVERVIEW

16 Bar pressure rated push-in fittings

FEATURES & BENEFITS

- Suitable for air and vacuum systems
- Re-usable
- Oval collet enables a quick release, no special tools required
- Lightweight compared to our competitors all metal 16 bar rated alternatives
- Convenient one-touch + fittings provide instant connection
- Elliptical release ring facilitates pneumatic installation in confined spaces
- Nickel plated brass ensures anti-corrosion and anti-contamination
- All taper threaded fittings are pre-coated with Teflon sealant and require no additional sealing

TEMPERATURE RANGE

-10°C to +60°C
(dependent upon tubing specification)

PRESSURE



-0.8 to 16 bar
(dependent upon tubing specification)

PUSH-IN CONNECTORS

PLASTIC



STRAIGHT MALE CONNECTOR

MALE CONNECTOR MALE PUSH-IN / BSPT PLASTIC

		
33001010	4	M5
33001020	4	M6
33001030	4	1/8"
33001040	4	1/4"
33001050	4	3/8"
33001060	6	M5
33001070	6	M6
33001080	6	1/8"
33001090	6	1/4"
33001100	6	3/8"
33001110	6	1/2"
33001120	8	1/8"
33001130	8	1/4"
33001140	8	3/8"
33001150	8	1/2"
33001160	10	1/8"
33001170	10	1/4"
33001180	10	3/8"
33001190	10	1/2"
33001200	12	1/4"
33001510	12	3/8"
33001520	12	1/2"





MALE CONNECTOR WITH O-RING MALE PUSH-IN / BSP PLASTIC

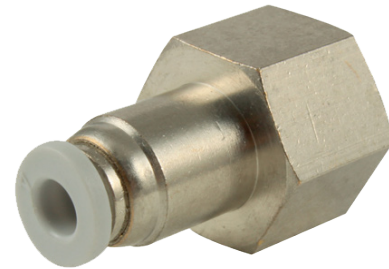
		
33001530	4	1/8"
33001540	4	1/4"
33001550	6	1/8"
33001560	6	1/4"
33001570	6	3/8"
33001580	8	1/8"
33001590	8	1/4"
33001600	8	3/8"
33001610	8	1/2"
33001620	10	1/8"
33001630	10	1/4"
33001640	10	3/8"
33001910	10	1/2"
33001920	12	1/4"
33001930	12	3/8"
33001940	12	1/2"



STRAIGHT FEMALE CONNECTOR



FEMALE CONNECTOR FEMALE PUSH-IN / BSP
PLASTIC

		
33001950	4	1/8"
33001960	4	1/4"
33001970	6	1/8"
33001980	6	1/4"
33001990	6	3/8"
33002000	8	1/8"
33002010	8	1/4"
33002300	8	3/8"
33002310	8	1/2"
33002320	10	1/8"
33002330	10	1/4"
33002340	10	3/8"
33002350	10	1/2"
33002355	12	1/4"
33002360	12	3/8"
33002370	12	1/2"



ELBOW MALE CONNECTOR

SWIVELLING ELBOW CONNECTOR MALE WITH O-RING
MALE PUSH-IN / BSP PLASTIC

		
33002790	4	1/8"
33002800	4	1/4"
33003010	6	1/8"
33003020	6	1/4"
33003030	6	3/8"
33003040	8	1/8"
33003050	8	1/4"
33003060	8	3/8"
33003070	8	1/2"
33003080	10	1/8"
33003090	10	1/4"
33003100	10	3/8"
33003110	10	1/2"
33003120	12	1/4"
33003130	12	3/8"
33003140	12	1/2"





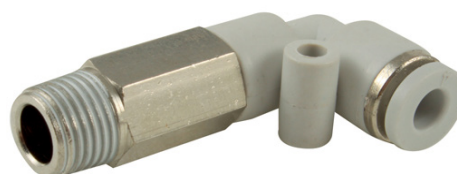
PUSH-IN CONNECTORS

PLASTIC



ELBOW MALE CONNECTOR

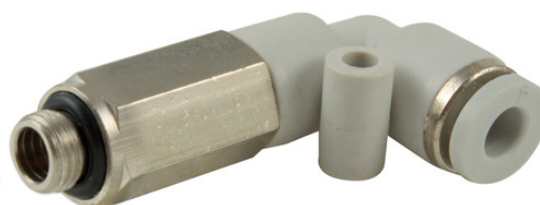
SWIVELLING ELBOW MALE CONNECTOR
MALE PUSH-IN / BSPT PLASTIC

		
33003260	4	M5
33003270	4	1/8"
33003280	4	1/4"
33003290	6	M5
33003300	6	1/8"
33003310	6	1/4"
33003320	6	3/8"
33003330	8	1/8"
33003340	8	1/4"
33003350	8	3/8"
33003360	10	1/8"
33003370	10	1/4"
33003380	10	3/8"
33003390	10	1/2"
33003400	12	1/4"
33003410	12	3/8"
33003420	12	1/2"





SWIVELLING EXTENDED ELBOW CONNECTOR MALE
WITH O-RING MALE PUSH-IN / BSP PLASTIC

		
33003510	4	1/8"
33003520	4	1/4"
33003530	6	1/8"
33003540	6	1/4"
33003550	6	3/8"
33003555	8	1/8"
33003560	8	1/4"
33003570	10	1/8"
33003580	10	1/4"
33003590	10	3/8"
33003600	12	3/8"



ELBOW MALE CONNECTOR

SWIVELLING MALE ELBOW CONNECTOR WITH O-RING
MALE PUSH-IN / BSPT PLASTIC

		
33002380	4	M5
33002610	4	M6
33002620	4	1/8"
33002630	4	1/4"
33002640	6	<5
33002660	6	M6
33002670	6	1/8"
33002680	6	1/4"
33002690	6	3/8"
33002700	6	1/2"
33002710	8	1/8"
33002720	8	1/4"
33002730	8	3/8"
33002735	8	1/2"
33002740	10	1/8"
33002745	10	1/4"
33002750	10	3/8"
33002760	10	1/2"
33002770	12	1/4"
33002780	12	3/8"
33002785	12	1/2"





PUSH-IN CONNECTORS

PLASTIC

Y MALE CONNECTOR



SWIVELLING Y CONNECTOR MALE
MALE PUSH-IN / BSPT PLASTIC

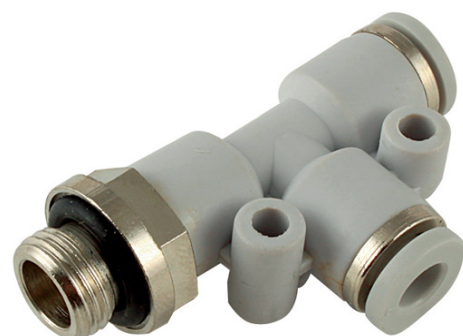
		
33004150	4	M5
33004160	4	1/8"
33004170	6	M5
33004180	6	1/8"
33004190	6	1/4"
33004200	6	3/8"
33004210	8	1/8"
33004220	8	1/4"
33004410	8	3/8"
33004420	8	1/2"
33004430	10	1/8"
33004440	10	1/4"
33004450	10	3/8"
33004460	10	1/2"
33004470	12	1/4"
33004480	12	3/8"
33004490	12	1/2"



TEE MALE CONNECTOR



SWIVELLING LATERAL TEE CONNECTOR MALE WITH
O-RING MALE PUSH-IN / BSP PLASTIC

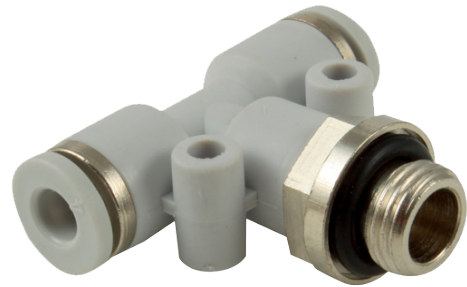
		
33003810	4	1/8"
33003820	4	1/4"
33003830	6	1/8"
33003840	6	1/4"
33003850	8	1/4"
33003860	10	1/4"



TEE MALE CONNECTOR


SWIVELLING TEE CONNECTOR MALE WITH O-RING
MALE PUSH-IN / BSP PLASTIC

		
33003870	4	1/8"
33003880	4	1/4"
33003890	6	1/8"
33003900	6	1/4"
33003910	6	3/8"
33003920	8	1/8"
33003930	8	1/4"
33003940	8	3/8"
33003950	8	1/2"
33003960	10	1/8"
33003970	10	1/4"
33004110	10	3/8"
33004120	12	1/4"
33004130	12	3/8"
33004140	12	1/2"





STRAIGHT CONNECTOR

UNION CONNECTOR PUSH-IN PLASTIC

	
33004770	4
33004780	6
33004790	8
33005010	10
33005020	12



UNION CONNECTOR PUSH-IN PLASTIC


		
33005030	6	4
33005040	8	6
33005050	10	8
33005060	12	10



PUSH-IN CONNECTORS PLASTIC

ELBOW CONNECTOR


UNION ELBOW CONNECTOR PUSH-IN / BSPT
PLASTIC

	
33005070	4
33005080	6
33005090	8
33005100	10
33005110	12



TEE CONNECTOR


UNION TEE CONNECTOR PUSH-IN PLASTIC

	
33005120	4
33005130	6
33005140	8
33005150	10
33005160	12





Y-CONNECTOR

UNION Y CONNECTOR PUSH-IN PLASTIC

	
33005170	4
33005180	6
33005190	8
33005310	10
33005320	12




UNION Y CONNECTOR PUSH-IN PLASTIC

		
33005330	4	6
33005340	6	8
33005345	8	10
33005350	12	12



CROSS CONNECTOR


UNION CROSS CONNECTOR PUSH-IN PLASTIC

	
33005360	4
33005380	6
33005390	8
33005510	10
33005520	12





BULKHEAD CONNECTOR

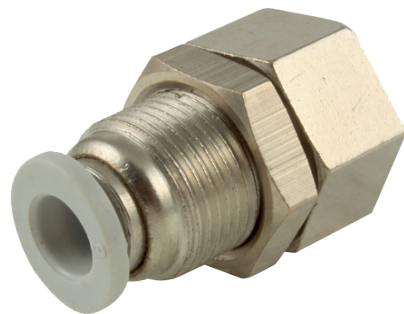
UNION BULKHEAD CONNECTOR PUSH-IN BRASS
NICKEL PLATED

	
33005530	4
33005540	6
33005550	8
33005560	10
33005570	12



FEMALE BULKHEAD CONNECTOR PUSH-IN / BSP
BRASS NICKEL PLATED

		
33004500	4	1/8"
33004510	4	1/4"
33004520	6	1/8"
33004530	6	1/4"
33004540	6	3/8"
33004550	6	1/2"
33004560	8	1/8"
33004570	8	1/4"
33004580	8	3/8"
33004590	8	1/2"
33004710	10	1/8"
33004720	10	1/4"
33004730	10	3/8"
33004740	10	1/2"
33004745	12	1/4"
33004750	12	3/8"
33004760	12	1/2"





PUSH-IN CONNECTORS

PLASTIC

STRAIGHT PLUG-IN CONNECTOR



UNION REDUCTION CONNECTOR STEM PUSH-IN PLASTIC

		stem 
33005580	4	6
33005590	4	8
33005600	6	8
33005610	6	10
33005620	8	10
33005630	10	12



ELBOW PLUG-IN CONNECTOR



UNION ELBOW ADJUSTABLE CONNECTOR STEM PUSH-IN PLASTIC

		stem 
33005640	4	4
33005650	6	6
33005660	8	8
33005670	10	10
33005680	12	12



Y PLUG-IN CONNECTOR


UNION Y ADJUSTABLE CONNECTOR STEM PUSH-IN PLASTIC

		stem 
33005810	6	6
33005820	8	8
33005830	10	10



PLUG



PUSH-IN

	
33005840	4
33005845	6
33005850	8
33005860	10
33005870	12



BANJO CONNECTOR

SINGLE BANJO MALE CONNECTOR PUSH-IN / BSPT PLASTIC

		
33005880	4	M5
33005890	4	M6
33006010	4	1/8"
33006020	6	M5
33006030	6	M6
33006040	6	1/8"
33006050	6	1/4"
33006060	6	3/8"
33006070	8	1/8"
33006080	8	1/4"
33006090	8	3/8"
33006210	10	1/4"
33006220	10	3/8"
33006230	10	1/2"
33006240	12	1/4"
33006250	12	3/8"
33006310	12	1/2"



PUSH-IN CONNECTORS

PLASTIC

MANIFOLD CONNECTOR

MANIFOLD MALE CONNECTOR WITH O-RING
PUSH-IN / BSP PLASTIC

	Inlet mm	Outlet mm
33006320	6	4
33006330	8	4
33006340	8	6
33006350	10	8





MANIFOLD MALE CONNECTOR WITH O-RING
PUSH-IN PLASTIC

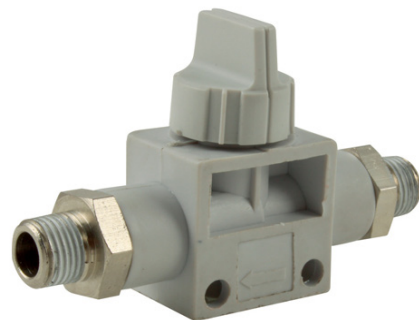
	Inlet mm	Outlet mm
33006360	6	4
33006510	8	4
33006520	8	6
33006530	10	6
33006540	10	8



VALVE MANUAL



VALVE MANUAL BSPT PLASTIC

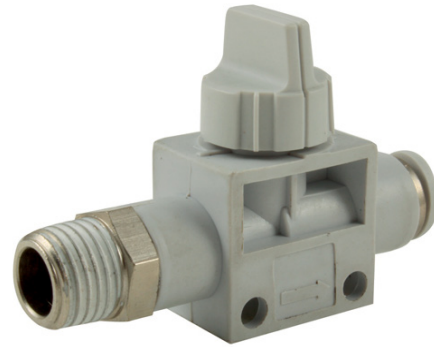
		
33006610	1/8"	1/8"
33006620	1/4"	1/8"
33006630	1/4"	1/4"
33006640	1/4"	3/8"
33006650	3/8"	3/8"
33006660	1/2"	3/8"
33006710	1/2"	1/2"





VALVE MANUAL

VALVE MANUAL PUSH-IN / BSPT PLASTIC

		
33006720	6	1/8"
33006730	6	1/4"
33006740	6	3/8"
33006810	8	1/8"
33006820	8	1/4"
33006830	8	3/8"
33006840	10	1/4"
33006850	10	3/8"
33006860	10	1/2"
33006910	12	1/4"
33006920	12	3/8"
33006930	12	1/2"



VALVE MANUAL PUSH-IN PLASTIC

		
33006940	4	4
33007110	6	4
33007120	6	6
33007130	8	6
33007140	8	8
33007150	10	10
33007210	12	10
33007220	12	12





PUSH-IN CONNECTORS

PLASTIC


FLOWREGULATOR

FLOWREGULATOR ELBOW MALE PUSH-IN / BSPT
PLASTIC

		
33007230	4	M5
33007240	4	1/8"
33007310	4	1/4"
33007320	6	M5
33007330	6	M6
33007340	6	1/8"
33007350	6	1/4"
33007360	6	3/8"
33007370	8	1/8"
33007380	8	1/4"
33007510	8	3/8"
33007520	8	1/2"
33007530	10	1/4"
33007540	10	3/8"
33007550	10	1/2"
33007610	12	1/4"
33007620	12	3/8"
33007630	12	1/2"



FLOWREGULATOR PUSH-IN PLASTIC

	
33007640	4
33007650	6
33007710	8
33007720	10
33007730	12

